



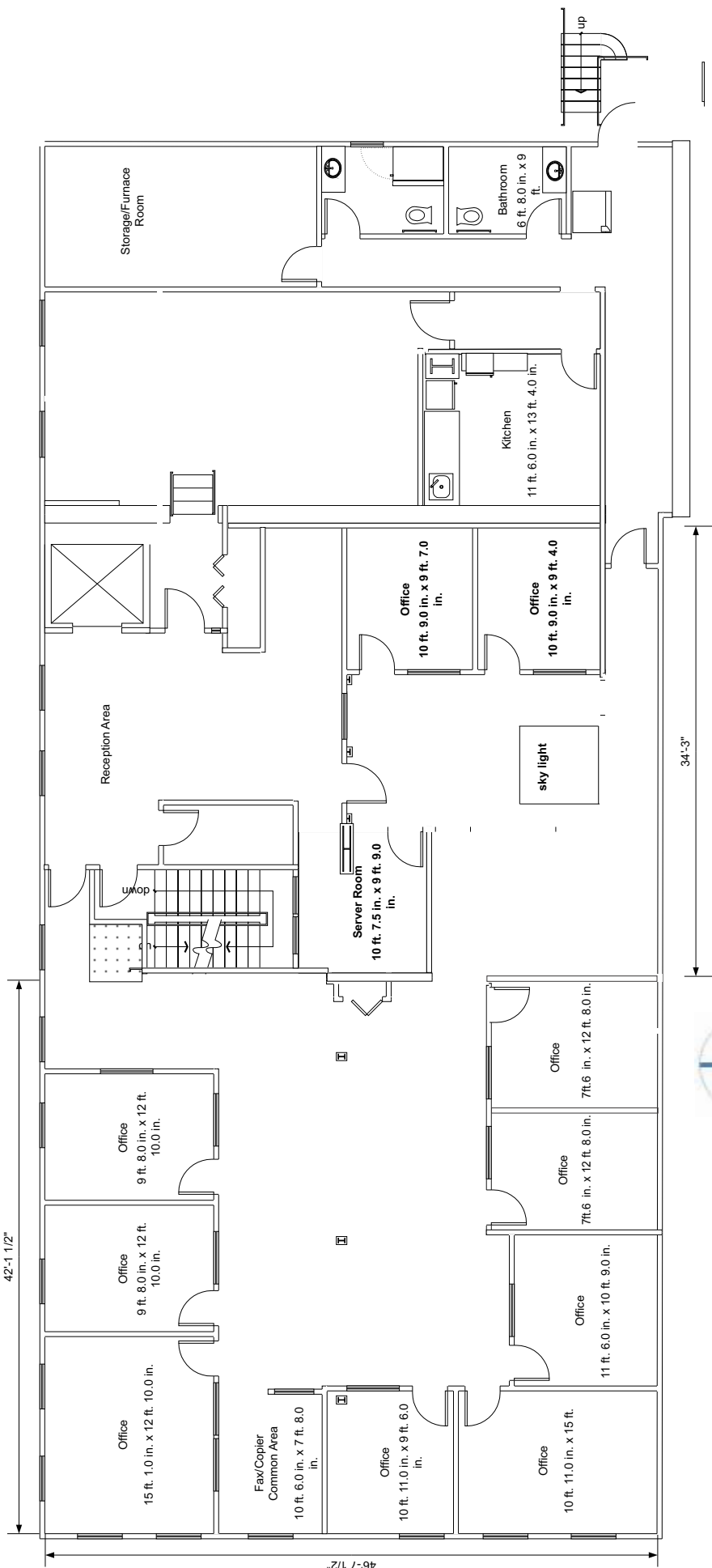
# DOWNTOWN OFFICE FOR LEASE

## 530 Fort St, Suite 200

Corner of Fort and Government

- 
- 4,671 Square Feet
  - Available Now
  - 2nd Floor Office Space
  - Significant Broadband Potential
- 

**PEMBERTON  
HOLMES**  
COMMERCIAL



- A superb 2nd (top) floor heritage premises.
- Dedicated Elevator
- Exceptional street presence
- Large boardroom and diverse variety of internal work spaces
- Located on one of the most prominent and best-known corners in Victoria.
- Extraordinary bandwidth is available to this building.



Clive Townley  
 Pemberton Holmes Ltd.  
 ct@islandnet.com  
 d: (250) 405-6264

Gail McClymont  
 Pemberton Holmes Ltd.  
 gailm@phpm.ca  
 t: (250) 478-9141

*The information contained herein is obtained from sources believed to be accurate, however, Pemberton Holmes Ltd. and its agents assume no liability for its accuracy and all parties are advised to verify all information to their own satisfaction. Prices and terms are subject to change without notice. All measurements are approximate. Copyright Clive Townley 2020*