

FOR LEASE

3233 DOUGLAS STREET
VICTORIA, B.C.



ABOUT

- ✓ Available now!
- ✓ 7,266 sq.ft.
- ✓ High traffic count area
- ✓ Large onsite parking lot
- ✓ Close to nearby amenities

**PEMBERTON
HOLMES**

• ESTABLISHED 1887 •

This large 7,266 sq.ft. space is located right on Douglas St., between Uptown Mall and Mayfair Shopping Centre, offering excellent business exposure and ample vehicle and foot traffic thanks to its central location near the Downtown Core. Douglas Street is one of Victoria's two busiest north-south traffic arteries, and it extends through and past the downtown area and into the Trans-Canada Highway. It is considered a major traffic route with a consistent flow of traffic at all times, making this site a desirable location for commercial business given its level of exposure and proximity to the Downtown Core of Victoria.

Downtown Victoria is rated as a premier travel destination across all of Canada, and around the world, thanks to its beautiful Inner Harbour, Old Town district, and ever-bustling downtown which remains a noteworthy and picturesque destination point for residents and tourists alike.

3233 DOUGLAS STREET

Size: 7,266 sq ft

Basic Rent: \$29.50 / sq ft

Add'l Rent: \$16.13 / sq ft

85



walk score

63

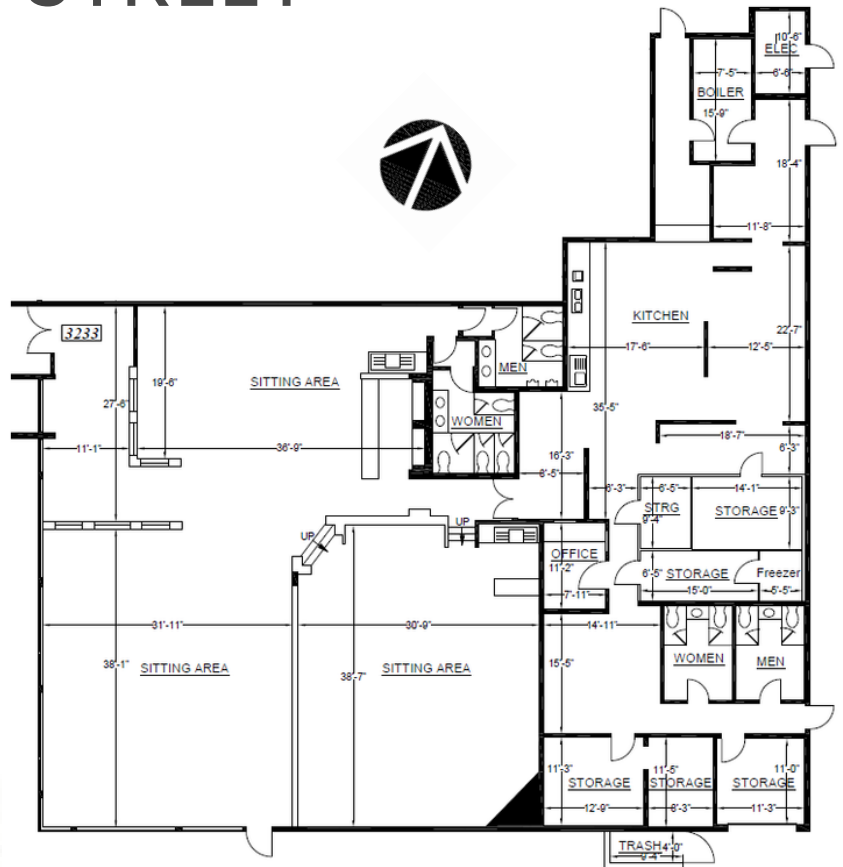


transit score

74



bike score



For more information or to arrange
a viewing please contact:

Gail McClymont
Pemberton Holmes Ltd.
250-478-9141
gailm@phpm.ca

Clive Townley
Pemberton Holmes Ltd.
250-405-6264
ct@islandnet.com

**PEMBERTON
HOLMES**

• ESTABLISHED 1887 •

The information contained herein is obtained from sources believed to be accurate; however, Pemberton Holmes Ltd. and its agents assume no liability for its accuracy and all parties are advised to verify all information to their own satisfaction. Prices and terms are subject to change without notice. All measurements are approximate. Copyright Gail McClymont & Pemberton Holmes Ltd. 2020.