

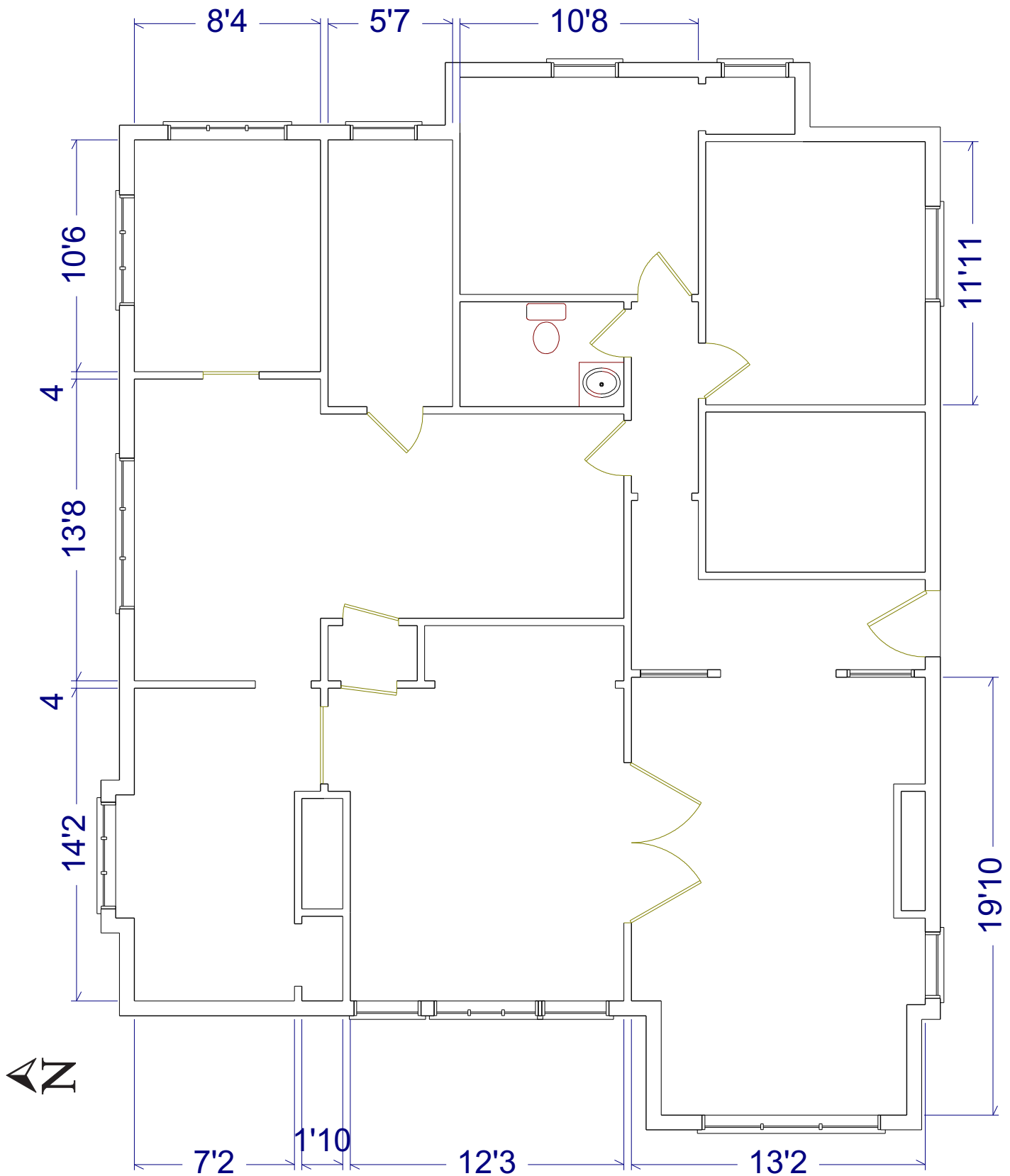


OFFICE SPACE FOR LEASE

#201-630 Goldstream Ave.

- Central Westshore Location
- Good Customer Parking
- 1,545 Square Feet
- Available Now
- Across from Royal Colwood Golf Club

PEMBERTON
HOLMES
COMMERCIAL



For more information please contact:

Gail McClymont
Pemberton Holmes Ltd.
250-478-9141
gailm@phpm.ca

Clive Townley
Pemberton Holmes Ltd.
250-405-6264
ct@islandnet.com

Size: 1,545 sq ft
Basic Rent: \$16.00/sq ft
Add'l Rent: \$7.69/sq ft

The information contained herein is obtained from sources believed to be accurate, however; Pemberton Holmes Ltd. its agents assume no liability for its accuracy and all parties are advised to verify all information to their own satisfaction. Prices and terms are subject to change without notice. All measurements are approximate. Copyright Clive Townley 2019.