

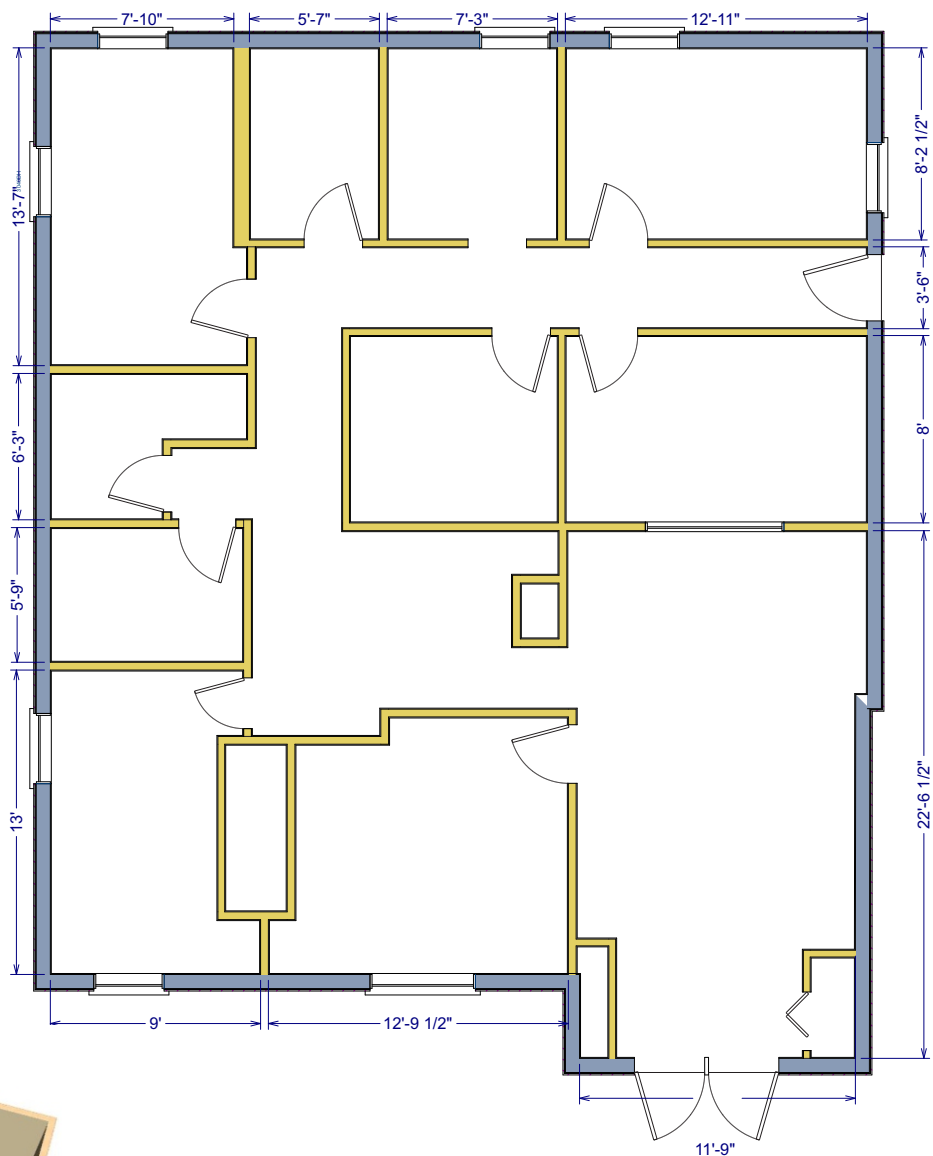


OFFICE SPACE FOR LEASE

#101-630 Goldstream Ave.

- Central Westshore Location
- Good Customer Parking
- 1,487 Square Feet
- Can Be Combined
- Across from Royal Colwood Golf Club

PEMBERTON
HOLMES
COMMERCIAL



Size: 1,487 sq ft
 Basic Rent: \$12.00/sq ft
 Add'l Rent: \$7.71/sq ft

For more information please contact:

Gail McClymont
 Pemberton Holmes Ltd.
 250-478-9141
gailm@phpm.ca

Clive Townley
 Pemberton Holmes Ltd.
 250-405-6264
ct@islandnet.com

The information contained herein is obtained from sources believed to be accurate, however; Pemberton Holmes Ltd. its agents assume no liability for its accuracy and all parties are advised to verify all information to their own satisfaction. Prices and terms are subject to change without notice. All measurements are approximate. Copyright Clive Townley 2019.